

exposure

for complete calendar listings
see www.ceramicsmonthly.org



1



2



3



4

1 Beth Bolgla's bucket, 14 in. (36 cm) in length, stoneware. 2 Anat Shiftan's untitled, from the *Garden Views* series, 14 in. (36 cm) in height, ceramic. "Hot Pots," at Clay Art Center (www.clayartcenter.org) in Port Chester, New York, through November 10. 3 Matthew Patton's *Wall Plate #3*, 13 in. (33 cm) in diameter, wheel-thrown porcelain, fired to cone 7 in oxidation. 4 Herrick Smith's pair of tumblers, to 7 in. (18 cm) in height, wheel-thrown and altered stoneware, fired to cone 10 in a reduction kiln. "Workhouse Clay International Ceramics Exhibition 2016," at Workhouse Art Center's Vulcan Gallery (www.workhousearts.org) in Lorton, Virginia, through October 16.



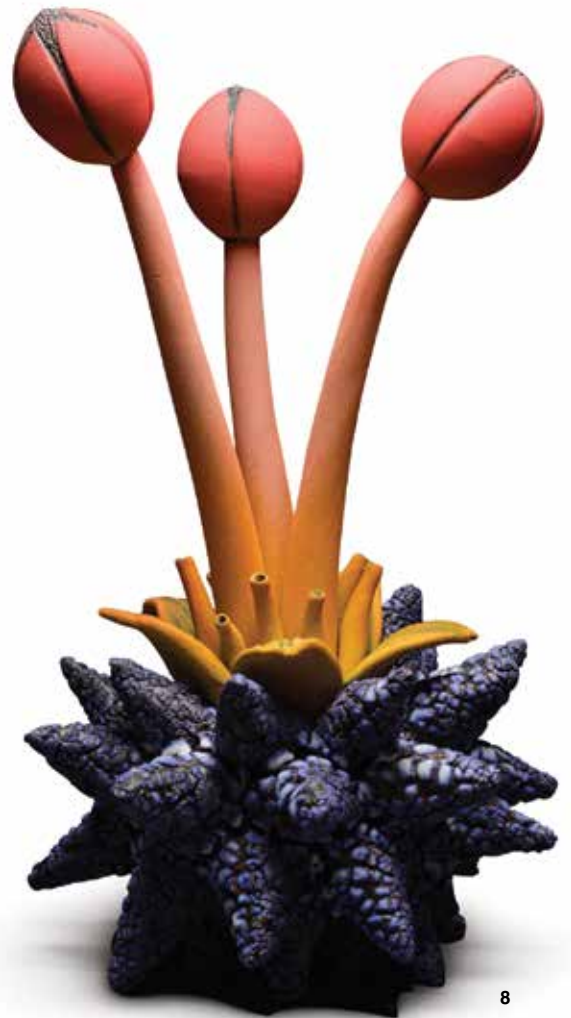
5



6



7



8

5 Jenna Stanton's *Pour Me...the self-medicating series*, to 8½ in. (22 cm) in height, slip-cast porcelain, silkscreened enamel decals, underglaze decoration, 2014–15. *Courtesy of MADE Design.* 6 Jean Cartier's vase, 8 in. (21 cm) in height, wheel-thrown red earthenware, white glaze, wax-resist decoration, 1952. *Collection of the Gardiner Museum, gift of Léopold L. Foulem.* 5, 6 *Photos: Toni Hafkenscheid.* "True Nordic," at Gardiner Museum (www.gardinermuseum.com) in Toronto, Ontario, Canada, through January 8. 7 Rebecca Zweibel's *Context vs. Structure*, 17 in. (43 cm) in height, earthenware, terra sigillata, copper carbonate wash, fired to cone 6. 8 William Kidd's untitled, 18 in. (46 cm) in height, earthenware, oxide stains, underglazes, crawl glaze. *Photo: Brian James Gallery.* "Craft Art Festival" at Florida CraftArt Gallery (www.FloridaCraftArt.org) in St. Petersburg, Florida, November 19–20.

exposure



1 Jennifer Lee's vessels, to 9¼ in. (23½ cm) in height, handbuilt colored stoneware, 2015–16. *Courtesy of Erskine, Hall & Coe. Photo: Michael Harvey.* "Jennifer Lee," at Erskine, Hall & Coe (www.erskinehallcoe.com) in London, England, through October 27.
2 Paul Wearing's oval ellipse vessel, 7 in. (18 cm) in height, Scarva Earthstone stoneware, multiple slips and glazes, 2016. **3** Justine Allison's vessels, to 3¼ in. (8 cm) in height, porcelain gilded with palladium leaf, 2015. "Made London," at One Marylebone (www.madelondon.org) in London, England, October 20–23. **4, 5** Stephen Procter's *Fertility Goddess vessel*, 3 ft. 7 in. (1.1 m) in height, stoneware, 2016. "Destinations and Sanctuaries: Clay Vessels in the Garden," at Blithewold Mansion (www.stephenprocter.com) in Bristol, Rhode Island, through October 10.



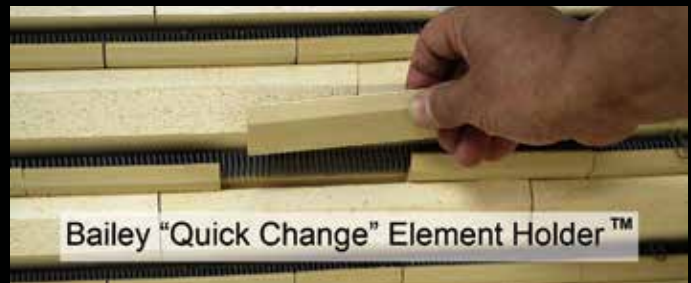


THERMAL LOGIC™ ELECTRICS



"The Thermal Logic features the most resilient hardened element holder system, and with all the other outstanding advanced features, is truly a kiln technician's dream".

Imagine an element holder so strong that it can withstand 22 lbs. of direct force and not fracture or chip. If need be, you can immediately pull the holder out and replace it in seconds if there was a kiln accident. This same innovative element holder adds to energy efficiency because it transfers more radiant heat into the load instead of the insulating brick. It doesn't get better than this! Look to Bailey innovation when you want the very best products and value.



- ## Features:
- Shatter Proof Element Holders
 - Emissivity Energy Efficient Coatings
 - Built in UV Eye Protection
 - Massive Long Life Elements
 - Bailey Quick-Fix Brick System
 - Bailey Quick-Change Element Holders
 - Easy Fit Shelf Design
 - Adjustable Door Seals
 - 6" Compressed Fiber Roof System
 - Stainless Steel Brick Edge Protectors
 - Bailey Efficiency-Plus Radiant Heat Pattern
 - Ventilated Exterior Frame
 - Ventilated Spy Port
 - Ventilated Door Seal
 - Ventilated Interior Chamber



**Professionals Know
the Difference.**

Bailey Pottery Equipment Corporation
www.baileypottery.com
(800) 431-6067 Direct: (845) 339-3721
Fax: (845) 339-5530

exposure



1



2

1 Rickie Barnett's *All Your Songs, Always With Me*, 17 in. (43 cm) in length, stoneware, slips, underglazes, stains, wood, 2016. 2 Tilly Troelstrup's *The one you feed* (detail), 36 in. (91 cm) in length, earthenware, underglaze, glaze, wire, twine, 2016. "Nothing to Write Home About," at Pottery Northwest (www.potterynorthwest.org) in Seattle, Washington, through October 31. 3 Sten Lykke Madsen's *Conversation*, 16½ in. (42 cm) in height, stoneware. Photo: Ole Akhøj. "Give your imagination free rein!," at CLAY Museum of Ceramic Art Denmark (www.claymuseum.dk) in Middelfart, Denmark, through February 5. 4 John Chalke's *Turned Over—The Other Side—Underneath It All*, 17 in. (43 cm) in diameter, multiple glazes, multi-fired ceramic wall piece, 2009. 5 John Chalke's *Black Trough of Waves*, 8½ in. (22 cm) in height, multiple glazes, multi-fired, 2011. "Directions of His Own," at Willock & Sax Gallery (www.willockandsaxgallery.com) in Banff, Alberta, Canada, October 8–31.



3



4



5



America's Most Trusted Glazes



LAYERING Potter's Choice

Celadon

C-40 Aqua

PC-57 Smokey Merlot
over C-40 Aqua

Explore the possibilities at
LayeringAmacoGlazes.com



PC-20 Blue Rutile over C-40 Aqua



PC-29 Deep Olive Speckle over C-40 Aqua



PC-37 UMBER Float over C-40 Aqua



PC-46 Lustrous Jade over C-40 Aqua



PC-53 Ancient Jasper over C-40 Aqua



PC-55 Chun Plum over C-40 Aqua

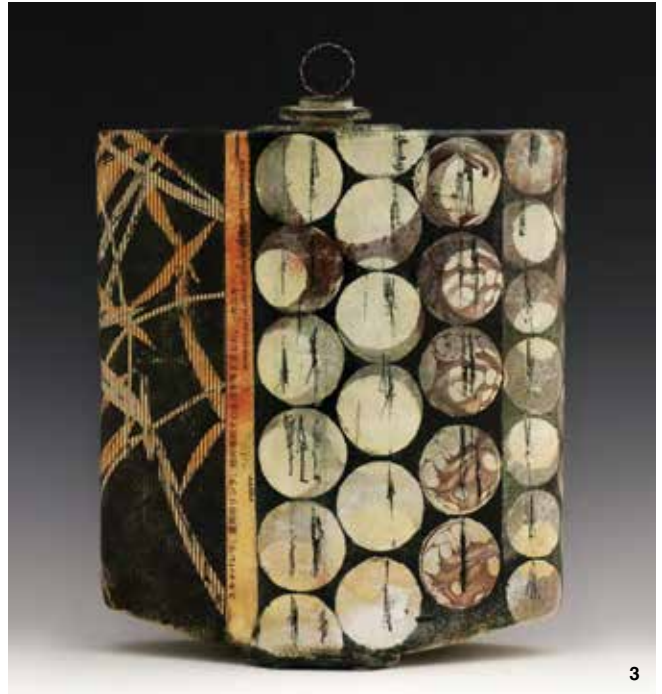
All test tiles are 3 brushed coats of top glaze over 3 brushed coats of base glaze on A-Mix 11-M Stoneware Clay. Samples were fired to Cone 6.



1



2



3

1 Rachel Foxwell's *Arc*, 6½ in. (17 cm) in height, white earthenware, slips, glaze. 2 Jennifer Hall's lidded pots, 7 in. (18 cm) in height, slip-decorated red earthenware, glaze, fired to 1940°F (1060°C), 2016. *Photo: Joe Purches.* "Members Showcase," at The Makers Guild in Wales (www.makersguildinwales.org.uk) in Cardiff, Wales, United Kingdom, through October 15. 3 Kanika Sircar's *Starchart*, 13 in. (33 cm) in height, handbuilt stoneware, slip, underglaze, ceramic pencil, laser decals, iron and copper wire, 2016. "Map Quest," at Waverly Street Gallery (www.waverlystreetgallery.com) in Bethesda, Maryland, November 8–December 3. 4 Morino Hiroaki Taimei's *WORK 16-2*, 19½ in. (50 cm) in height, glazed stoneware, 2016. 5 Morino Hiroaki Taimei's *WORK 16-10*, 13½ in. (34 cm) in height, glazed stoneware, 2016. 4, 5 *Photos: Hatakeyama Takashi.* "The Resonance Between Form and Color II," at The Salon Art + Design in New York, New York from November 10–14, and at Joan B. Mirviss LTD (www.mirviss.com) in New York, New York, November 15–December 16.



4



5